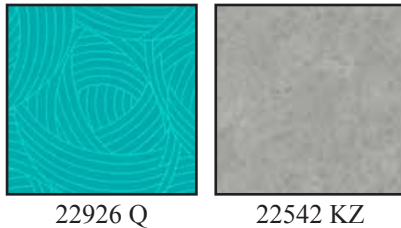
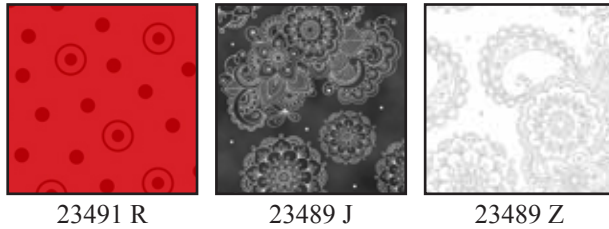
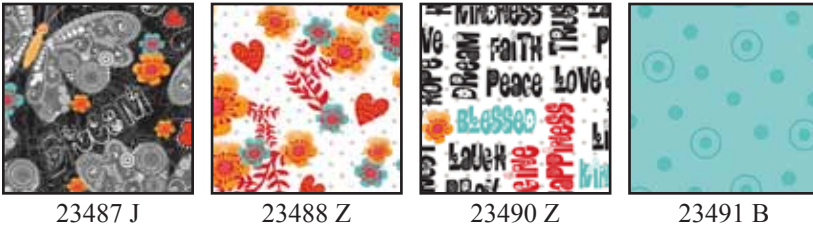


# Love Hope and Pray



Designed By: Karla Schulz  
Finished Quilt Size: 73" x 93"  
Skill Level: Beginner



| FABRIC REQUIREMENTS |                 |
|---------------------|-----------------|
| Design:             | Yards           |
| 23487 J             | 2 $\frac{1}{8}$ |
| 23488 Z             | 1               |
| 23490 Z             | $\frac{7}{8}$   |
| 23491 B             | 1 $\frac{3}{4}$ |
| 23491 R             | $\frac{1}{4}$   |
| 23489 J             | $\frac{3}{4}$   |
| 23489 Z             | $\frac{3}{4}$   |
| 22926 Q             | $\frac{2}{3}$   |
| 22542 KZ            | $\frac{1}{2}$   |
| Backing             | 5 $\frac{3}{4}$ |

## Cutting Directions:

**WOF** = width of fabric

### 23487 J: Butterfly Print

- Cut eight 6 $\frac{1}{2}$ " x **WOF** strips for outer border.
- Cut four 3 $\frac{1}{2}$ " x **WOF** strips.
- Sub-cut eight 3 $\frac{1}{2}$ " x 8" rectangles for Block A.
- Sub-cut eight 3 $\frac{1}{2}$ " x 5 $\frac{1}{2}$ " rectangles for Block B.

### 23488 Z: Flower Print

- Cut two 9 $\frac{1}{2}$ " **WOF** strips, sub-cut eight 8" x 9 $\frac{1}{2}$ " rectangles for Block A.
- Cut two 5 $\frac{1}{2}$ " **WOF** strips, sub-cut eight 5 $\frac{1}{2}$ " x 9" rectangles for Block B.

### 23490 Z: Word Print

- Cut two 6 $\frac{1}{2}$ " x **WOF** strips, sub-cut eight 6 $\frac{1}{2}$ " x 8" rectangles for Block A.
- Cut two 5 $\frac{1}{2}$ " x **WOF** strips, sub-cut into eight 5 $\frac{1}{2}$ " x 9" rectangles for Block B.

### 23491 B: Blue Dots

- Cut two 15 $\frac{1}{2}$ " x **WOF** strips, sub-cut sixteen 3" x 15 $\frac{1}{2}$ " strips for Block A.
- Cut eight 3" **WOF** strips, sub-cut sixteen 3" x 20 $\frac{1}{2}$ " strips for Block B.

### 23491 R: Red Dots

- Cut seven 1" x **WOF** strips for inner border.

### 23489 J: Black Lace Print

- Cut nine 2 $\frac{1}{2}$ " x **WOF** strips for binding.

### 23489 Z: White Lace Print

- Cut four 5 $\frac{1}{2}$ " x **WOF** strips, sub-cut eight 5 $\frac{1}{2}$ " x 14 $\frac{1}{2}$ " rectangles for Block B.

### 22926 Q: Dark Blue Print

- Cut six 3 $\frac{1}{2}$ " x **WOF** strips,
- Sub-cut sixteen 3 $\frac{1}{2}$ " x 8" rectangles for Block A
- Sub-cut sixteen 3 $\frac{1}{2}$ " x 5 $\frac{1}{2}$ " rectangles for Block B

### 22542 KZ: Smoke

- Cut two 5 $\frac{1}{2}$ " x **WOF** strips, sub-cut eight 5 $\frac{1}{2}$ " x 9" rectangles for Block A

## Piecing Instructions:

*Note: Use  $\frac{1}{4}$ " seam allowances*

### Block A



1. Sew a 3½" x 8" Dark Blue print to each end of a 8" x 9½" flowered rectangle. Press seams toward the Dark Blue.



2. Sew 3" x 15½" Blue Dot strip to each side. Press seams towards the Blue Dot print.



3. Sew a 3½" x 8" Butterfly print piece between a 6½" x 8" Smoke and the 6½" x 8" Word Print rectangles. Press seams toward large rectangles.



4. Join the top and bottom units to compete Block A
5. Repeat steps 1 – 4 to make eight A Blocks.

## Block B



1. Sew a 3½" x 5½" Dark Blue Print to each end of a White Lace 5½" x 14½" rectangle. Press seams toward the Dark Blue.



2. Sew a 3" x 20½" Blue Dot strip to each side. Press seams toward the Blue Dot print.



3. Sew a 3½" x 5½" Butterfly Print between 5½" x 9" Flower and Word print rectangles. Press seams toward large rectangles.



4. Join the top and bottom units to compete Block B.
5. Repeat steps 1 – 4 to make eight B Blocks.

## Quilt Assembly:

1. Refer to the quilt diagram. Arrange and sew blocks as shown.
2. Join the Red 1" x **WOF** inner border strips to make a long strip.
  - Cut two 1" x 60½" strips for the top and bottom inner borders.
  - Cut two 1" x 81½" strips for the side borders.
 Sew top & bottom borders to the pieced center. Press seams toward the border strips. Sew side borders to the pieced center. Press seams toward the border strips.
3. Join the Butterfly print 6½" x **WOF** outer border strips to make one long strip.
  - Cut two 6½" x 61½" for the top and bottom borders.
  - Cut two 6½" x 93½" for the side borders.
 Sew top and bottom borders to the pieced center. Press seams toward border. Sew side borders to the pieced center to complete the top. Press seams toward border.
4. Quilt as Desired, Bind and ENJOY.

*While all possible care has been taken to ensure the accuracy of this pattern, we are not responsible for printing errors or the way in which individual work varies.*