

FRONT



BACK



Finished quilt size: 43" x 50"



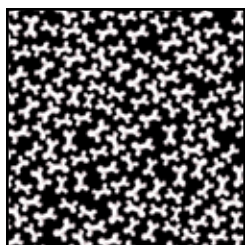
Finished Paw size: 7 1/8" x 10 3/8"



Finished Bow Tie size: 5" wide



22125 G



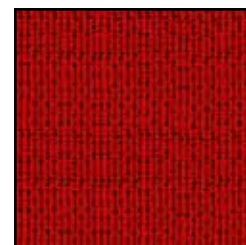
22127 J



22125 Z



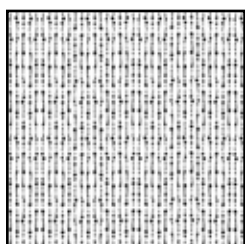
22126 Z



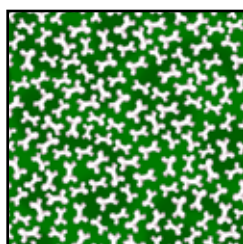
21542 R



22124 JR



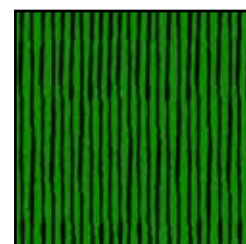
21542 ZJ



22127 F



22128 R



22129 G

Doggie Holiday Quilt	
FABRIC REQUIREMENTS	
Design	Yards
22125 G	$\frac{3}{4}$
22127 J	$\frac{3}{8}$
22125 Z	$\frac{1}{2}$
22126 Z	$\frac{1}{4}$
21542 R (binding)	$\frac{1}{2}$
21542 ZJ	$\frac{1}{2}$
22124 JR	$\frac{7}{8}$
22127 F	$\frac{1}{4}$
22124 JR (backing)	$3\frac{1}{4}$

Doggie Paw Christmas Stocking	
FABRIC REQUIREMENTS	
Design	Yards
22128 R (outer stocking)	$\frac{3}{8}$
21542 ZJ (cuff and lining)	$\frac{1}{2}$
22129 G (paw pads)	$\frac{1}{8}$

Doggie Dress Up Bow Tie Or Hair Clip	
FABRIC REQUIREMENTS	
Design	Yards
22127 F	$\frac{3}{8}$

Doggie Holiday Quilt

Quilt designed by Vicki Niro

Finished quilt size: 43" x 50"

Block size: 7" x 7"

Skill level: Confident Beginner

Cutting Directions:

Note: WOF = width of fabric.

22127F Green Bones

- Cut (1) 4" x WOF strip. Recut strip into (6) 4" squares.

22126Z White Dogs

- Cut (1) 4" x WOF strip. Recut strip into (3) 4" x 7 1/2" strips, and (1) 4" x 14 1/2" strip.

22127J Black Bones

- Cut (2) 4 3/8" x WOF strips. Recut strips into (13) 4 3/8" squares.

21542ZJ White Beads

- Cut (1) 4" x WOF strip. Recut strip into (8) 4" squares.
- Cut (2) 4 3/8" x WOF strips. Recut strip into (13) 4 3/8" squares.

21542R Red Beads

- Cut (5) 2 1/4" x WOF strips for binding.

22125G Green Dogs/Stocking

- Cut (2) 4 1/2" x 42 1/2" strips.
- Cut (3) 4 1/2" x WOF strips.

22124JR Doggie Holiday Allover Patches

- Fussy-cut (11) 7 1/2" x 7 1/2" patches, centering patch designs in each square.

**Note: You will need 4 rows of patches. Because the patches are not 7 1/2" wide, you will have to cut a little into adjacent patches to get the required size. Set aside the remaining patches for another project. We suggest gift tags, greeting cards or doggie treat bags.*

- Cut 3 panel squares from each fabric width, cutting every other panel.
- Cut (2) 58" lengths for backing.

22125Z White Dogs/Stocking

- Cut (3) 4" x WOF strips. Recut strips into (1) 4" x 11" strip, (1) 4" x 25" strip and (2) 4" x 28 1/2" strips.

Making the Four-Patch Blocks:

1. Join (1) 4" green bone square with (1) 4" white bead square to make a green/white unit. Press seam toward the dark square.

**Note: Pay attention to the direction of the bead lines when joining squares, referring to the diagram.*

Repeat to make 6 units. Join 2 units to make a Four Patch block. Press seam to 1 side. Repeat to make 3 Four Patch blocks.

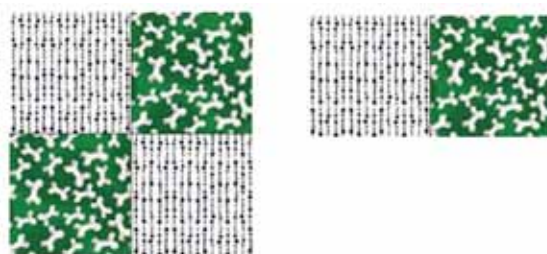


Diagram 1

Making the Triangle Units:

1. Draw a diagonal line on the wrong side of each 4 3/8" black bones square. Place a marked square right sides together with a 4 3/8" white bead square and stitch 1/4" on each side of the marked line.

**Note: Be careful when placing the white bead squares to keep the direction of the bead lines all in the same direction referring to the diagram to make identical units with beads running in the correct direction.*

Cut apart on the marked line, open the units and press with seams toward the dark side. Repeat with remaining square to make a total of 26 triangle units.



Diagram 2

Quilt Assembly: Refer to quilt image for accurate image placement.

1. Select and join (2) 7 ½” Doggie Holiday patches with (1) 4” x 7 ½” white dog rectangle and 1 Four-Patch block to make Row 1. Press seams toward the left end.
2. Select and join 3 Doggie Holiday patches with (1) 4” x 7 ½” white dog rectangle to make Row 2. Press seams toward the right end.



3. Join Rows 1 and 2. Press seam to 1 side. Add the 4” x 14 ½” white dog strip to the Four-Patch end and a 4” x 28 ½” white dog/stocking strip to the top of the pieced section. Press seams toward the strips.
4. Join five triangle units and add to the left end of the pieced unit to complete the top section. Press seam away from the triangle unit.



5. Select and join (3) 7 ½” Doggie Holiday patches with (1) 4” x 7 ½” white dog rectangle and one Four-Patch block to complete Row 3. Press seams toward to the left end.



6. Sew this row to the top section. Press seam to 1 side. Add the 4” x 25” white dog/stocking strip to the right edge. Press seam toward the strip.
7. Select and join 3 Doggie Holiday patches with 1 Four-Patch block to make Row 4. Press seams toward the right end. Sew the 4” x 28 ½” white dogs/stocking strip to the bottom of the row and add the 4” x 11” white dogs/stocking strip to the left end. Press seams toward the strips.
8. Join 3 triangle units. Press seams to 1 side. Sew this unit to the right end of the pieced row. Press seam toward the strip. Sew the row to the bottom of the pieced section. Press seam toward the row.



9. Join 9 triangle units and add a 4” white bead square to the dark end to make a top strip. Repeat to make the bottom strip. Press seams in 1 direction. Sew these strips to the top and bottom of the pieced section to complete the pieced center. Press seams away from the pieced strips.
10. Sew a 4 ½” x 42 ½” green dog stocking strip to opposite sides of the pieced center. Join the 4 ½” x WOF green dogs/stocking strips on the short ends to make a long strip; press seams open. Recut the strip into (2) 4 ½” x 43 ½” strips. Sew these strips to the top and bottom of the pieced center to complete the quilt top. Press seams toward the strips.
11. Join the 2 ¼”-wide red bead binding strips with diagonal seams, trim seams to ¼” and press open to make a long strip.
12. Remove selvage edges from each 58” length of backing. Join the 2 backing lengths along the 58” edges using a ⅜” seam allowance. Press seam to 1 side and trim to 51” x 58”.
13. Layer the batting, backing, and completed top, then quilt and bind using your favorite methods to complete the quilt.

Doggie Holiday Paw Stocking

Stocking designed by Vicki Niro

Finished size: 7 1/8" x 10 3/8"

Skill level: Beginner

Additional Materials:

- 1/4 yard fusible web
- Batting

Cutting Directions:

Note: WOF = width of fabric.

22129G Green Stripe

- Bond fusible web to the wrong side of the green stripe.
- Trace paw pad shapes onto the paper side of the fused fabric.
- Cut out shapes on traced lines and remove paper backing.

22128R Red Blender

- Cut 1 each B and reverse B stocking pieces using pattern given, adding a 3/8" seam allowance all around when cutting.

21542ZJ White Beads

- Cut 1 each B and reverse B lining pieces using pattern given, adding a 3/8" seam allowance all around when cutting.
- Cut 2 each A and reverse A cuff pieces using pattern given, adding a 3/8" seam allowance all around when cutting.
- Cut (1) 1 1/2" x 5" strip for hanging loop.

Batting

- Cut 2 B stocking pieces and 2 A cuff pieces from batting.

Completing the Stocking:

1. Layer and machine-quilt 1 red B stocking piece with 1 batting piece for stocking front. Repeat to make the stocking back.
2. Repeat step 1 with 1 each A cuff and reverse A cuff and batting pieces to make 2 quilted A cuff pieces.
3. Sew a quilted A cuff piece to the top edge of each quilted stocking. Repeat with unquilted cuff pieces and the stocking lining pieces, being careful to add the reverse cuff pieces to the reverse stocking and lining pieces. Press seams open.

4. Arrange the paw pad pieces on the front B stocking piece referring to the pattern for positioning. Fuse shapes in place. Using a straight stitch, appliqué each piece in place, stitching 1/4" from the raw edges.

5. Place the two red quilted stocking pieces right sides together; stitch around outer edges using a 3/8" seam allowance, leaving the top edge open. Turn right side out and press edges flat. Turn wrong side out again after pressing.

6. Repeat step 5 with the lining pieces, leaving a 3–4" opening on one side for turning later. Turn the lining stocking right side out and press edges flat.

7. Fold the 1 1/2" x 5" hanging loop in half with wrong sides together along length and press to make a creased line. Open the folded strip and with wrong side up, fold each long edge to the creased line and press. Fold together along the center creased line to enclose the raw edges and make a 3/8"-wide strip; stitch along the long open edge to finish the loop strip.

8. Pin the raw ends of the loop strip together to make the hanging loop and baste to the right side of the stocking top back 1/2" from the side edge.

9. Place the stocking lining inside the stitched stocking with right sides together and stitch around the top edge. Turn the stocking right side out through the opening left in the lining. Stitch the lining hole closed.

10. Push the lining inside the stocking and press flat.

11. Topstitch around the top edge of the stocking to finish.

Doggie Holiday Bow Tie

Bow Tie designed by Vicki Niro

Finished size: Approximately 5" wide

Skill level: Beginner

Additional Supplies:

- 1 Bow Tie Accessories Kit (7/8" slider and clip set or 1/2"-wide elastic the length of the measurement around the dog's neck plus 1").
- Scraps medium-weight fusible interfacing.

Cutting Directions:

Note: WOF = width of fabric.

22127F Green Bones

- Cut (1) strip 6½" x WOF; recut (2) 6½" x 5½" strips (lower bow); recut (2) 4½" x 3½" strips (upper bow); recut (1) 2½" x 3" strip (knot).
- Neckband (see below for cutting instructions)

Interfacing

- Cut (1) 6½" x 5½" strip.
- Cut (1) 4½" x 3½" strip.

Cutting the Neck Band:

1. Whether using elastic or the Bow Tie Accessory Kit, you will need to cut a piece of fabric 2" by the measurement of the dog's neck plus 6".

Completing the Bow Tie:

1. Following the manufacturer's instructions, fuse the corresponding size interfacing strips to the wrong side of (1) 6½" x 5½" strip and one 4½" x 3½" strip.
2. With right sides together, sew the interfaced strips to the corresponding-size fabric strips, leaving a 2" opening on 1 long side of each stitched unit for turning. Turn right side out; press and turn opening edges to the inside. Stitch opening edges closed.
3. Fold the 2½" x 3" knot piece in half along the length with right sides together and sew along the long edge. Turn right side out, center seam on 1 side and press.
** Note: The seam side will be considered the wrong side.* Fold with right sides together and sew the short ends together with a ⅜" seam. Open the seam allowance and tack each side to the knot ring. Turn the knot ring right side out.
4. If using the Bowtie Accessory Kit, fold the neckband strip in half with right sides together along the length and sew along the long edge using a ⅜" seam allowance. Turn right side out and press, centering the seam in the middle of 1 side.
** Note: This will be considered the wrong side of the neckband.*

5. Fold ¼" of a short end toward the wrong side; press. Fold again and stitch in place.

6. Follow the Bowtie Accessory Kit package directions to attach it to the strip.

7. If using the elastic, fold the neckband strip in half along length with right sides together along the length and sew the long edge with a ⅜" seam allowance.

8. Place the elastic on top of the neckband tube (not turned yet) and stitch on 1 short end to hold the elastic in place. Turn the tube right side out, gathering the fabric on the elastic. Stitch through all thicknesses ¾" from the open end.

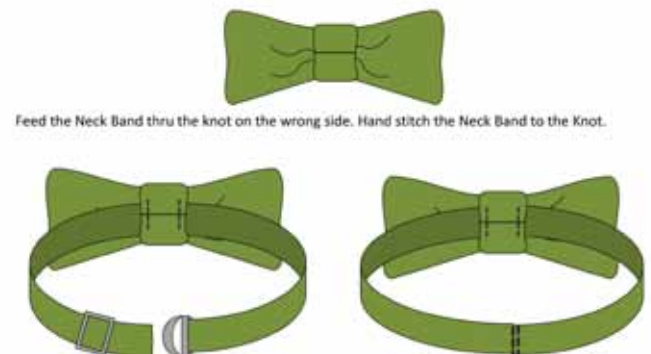
**Note: One end of the band will be finished with elastic attached at that end and inside the tube, which will be gathered on the elastic to allow it to stretch.*

9. Trim the elastic at the seam to ¼". Fold the fabric seam allowance over the elastic and stitch down to finish the end.

**Note: The end of the elastic will be stitched inside the seam ends.*

Making the Bowtie:

1. Center the shorter fabric strip on top of the longer fabric strip and pleat at the center. Hand-stitch a few locking stitches to hold the pleats together. Slide the knot ring over the pleated rectangles, centering the seam on the back side.
2. Feed the neckband through the knot on the wrong side; hand-stitch the neckband to the wrong side of the knot.
3. If using the elastic neckband, overlap the ends, hiding the raw stitched end, and stitch on top of previously stitched seam. Repeat stitching close to the first stitching to secure.



While all possible care has been taken to ensure the accuracy of this pattern, we are not responsible for printing errors or the way in which individual work varies.

