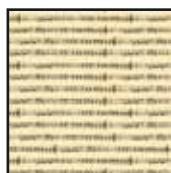




Finished Size: 61 " x 61 "



22104 G



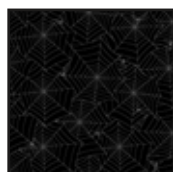
22107 E



22108 G  
(inc binding)



22102 JE



21111 J



22108 O



22105 E  
(inc backing)

### FABRIC REQUIREMENTS

Design	Yards
22104 G (5 motifs)	$\frac{2}{3}$ or 1 repeat
22107 E	$\frac{1}{2}$
22108 G (inc binding)	$\frac{2}{3}$
22102 JE	2
21111 J	$\frac{7}{8}$
22108 O	$\frac{1}{2}$
22105 E (backing)	4

# Creepers Peepers

## Creepers Peepers

Finished quilt size: 61" x 61"

Finished block size: 11 1/4" x 11 1/4"

Number of blocks: 4 pieced blocks and

5 panel blocks

Skill level: Intermediate

### Cutting Directions: WOF = Width of Fabric

#### 22104-G Large Blocks

- Cut (5) 11 3/4" squares from the Large Blocks panel, centering motifs in the squares.

#### 22102-JE Character Stripe

- Cut (4) identical 65" stripe motifs along the length of the stripe for wide borders. Four of the stripe motifs appear across the width of the fabric.
- Cut these motifs apart through the center of the orange area separating the motifs. The cut strips should be approximately 10 3/4" wide to finish at approximately 10 1/4".

#### 22107-E Cream Music Score

- Cut (1) 4 5/8" x WOF strip. Cut the strip into (8) 4 5/8" squares for pieced blocks.
- Cut (1) 4 1/4" x WOF strip. Cut the strip into (4) 4 1/4" squares for pieced blocks.
- Cut (2) 1 3/4" x WOF strips for side units in the pieced blocks.

#### 22108-G Green Blender

- Cut (1) 1 1/2" x WOF strip. Cut the strip into (16) 1 1/2" squares for sashing.
- Cut (7) 2 1/2" x WOF strips for binding.

#### 22108-O Orange Blender

- Cut (1) 11 3/4" x WOF strip. Cut the strip into (24) 1 1/2" x 11 3/4" strips for sashing.

#### 21111-J Black Spider Webs

- Cut (1) 4 5/8" x WOF strip. Cut the strip into (8) 4 5/8" squares for pieced blocks.
- Cut (4) 1 3/4" x WOF strip for side units in the pieced blocks.
- Cut (7) 2" x WOF strips for outer border.

#### 22105-E Owl Toss

- Cut (2) 70" strips along the length of fabric.

[www.QuiltingTreasures.com](http://www.QuiltingTreasures.com)

### A Blocks:

1. Sew a 1 3/4"-wide cream music score strip between (2) 1 3/4"-wide black spider webs strips to make a black/cream/black strip set. Press seams toward the black strips. Repeat to make a second strip set. Crosscut the strip sets into (16) 4 1/4" side units. Diagram 1.
2. Mark a diagonal line from corner to corner on the wrong side of each 4 5/8" cream music score square. Place a marked square right sides together with a

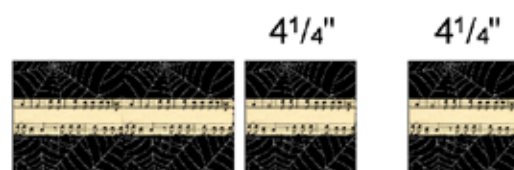


Diagram 1

- 4 5/8" black spider webs square and stitch 1/4" on each side of the marked line. Cut apart on the marked line, open the stitched units and press with seams toward the black triangles to complete 2 corner units. Repeat to make a total of 16 corner units. Diagram 2.



Diagram 2

3. To complete 1 A block, sew a side unit to opposite sides of a 4 1/4" cream music score square to make the center row. Press seams toward the cream square. Diagram 3.



Diagram 3



# Creepers Peepers

4. Sew a corner unit to opposite sides of a side unit to complete the top row. Repeat to make the bottom row. Press seams toward the corner units.

Diagram 4.



Diagram 4

5. Sew the center row between the top and bottom rows to complete the block. Press seams toward the center row. Diagram 5.



Diagram 5

6. Repeat steps 3–5 to complete a total of 4 A blocks.

## Quilt Assembly:

1. Referring to the quilt diagram or photo, join 1 A block, (2) 11 3/4" Large Block squares and (4) 1 1/2" x 11 3/4" orange blender strips to make the top row, starting and ending with an orange strip. Press seams toward the orange strips. Repeat to make a second block row.

2. Join 2 A blocks with (1) 11 3/4" Large Block square and (4) 1 1/2" x 11 3/4" orange blender strips to make the center block row, starting and ending with an orange strip. Press seams toward the

orange strips.

3. Join (3) 1 1/2" x 11 3/4" orange blender strips with (4) 1 1/2" green blender squares to make a sashing row. Press seams toward the orange strips. Repeat to make a total of 4 sashing rows.

4. Join the block rows and the sashing rows, beginning and ending with a sashing row, to complete the quilt center. Press seams toward the sashing rows.

5. Join the 2" x 42" strips black spider webs on the short ends to make 1 long strip. Press seams to 1 side. Cut the strip into (4) 65" strips.

6. Sew a black strip to the cream stripe edge of each 11"- wide Character Stripe strip to make wide border strips. Press seams toward the black strips.

7. Center and sew a wide border strip to each side of the quilt center, starting and stopping stitching 1/4" from corners of the quilt top. Miter corner seams and trim excess to 1/4". Press seams in the mitered seam open and the long seams toward the border strips.

8. Remove the selvage edges from the backing pieces. Join the pieces on the long edges with a 1/2" seam allowance. Press seam open. Trim the side edges to make a 70" x 70" backing piece.

9. Layer, quilt and bind, using your favorite method and the green blender binding strips, to complete the quilt.