

Very Fairy



©2010 Loralie Harris

Approximate Finished Size: 68" x 68"



21338 Z



21337 B



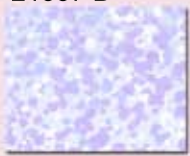
21336 ZV



21334 S



21338 V



21234 L



21335 S



21234 S



21338 D



21339 Z



21335 P



21333 B



21337 P



21336 ZP



21334 B



21332 PL

Pattern	Yards
21335 P	1 1/2
21339 Z	3/8
21234 L	1 5/8
(inc 5/8 binding)	
21332 PL	1 Panel
21335 S	4 1/4
(inc 4 yds backing)	
21336 ZP	1/4
21336 ZV	1/4
21337 B	1/4
21337 P	1/4
21338 D	1/4
21338 V	1/4
21338 Z	1/4
21334 S	1/4
21333 B	1/4
21334 S	1/4
21234 S	1/4



Loralie Very Fairy

by Kari Nichols of Mountainpeek Creations™
www.mountainpeekcreations.com

Required Fabrics:

21332PL – 1 panel
21234L – 1 $\frac{5}{8}$ yd (picture sashing and $\frac{5}{8}$ yd binding)
21339Z – $\frac{3}{8}$ yd (inner border)
21335P – 1 $\frac{1}{2}$ yds (outer border)

Accent Fabrics(12)

21336ZP - $\frac{1}{4}$ yd
21338V - $\frac{1}{4}$ yd
21338Z - $\frac{1}{4}$ yd
21338D - $\frac{1}{4}$ yd
21337B - $\frac{1}{4}$ yd
21337P - $\frac{1}{4}$ yd
21336ZV - $\frac{1}{4}$ yd
21335P - $\frac{1}{4}$ yd
21335S – 4 $\frac{1}{4}$ yd (inc 4 yds backing)
21334S - $\frac{1}{4}$ yd
21334B - $\frac{1}{4}$ yd
21333B – $\frac{1}{4}$ yd

*NOTE: WOF - width of fabric, WST - wrong sides together
All seams are $\frac{1}{4}$ " unless otherwise specified. Strips are cut selvedge to selvedge.*

Cutting Instructions:

Panel: Cut from panel, along picture lines:

- (1) 16" x 6"
- (5) 6" x 8"
- (1) 8" x 6"
- (4) 10" x 8"
- (3) 8" x 10"

There will be (2) pictures unused from the panel.

21234L : Cut (14) 2" x WOF strips

Join a 2" 21234L fabric strip to sides of each panel picture. Press seams away from picture. Next, join a 2" 21234 L fabric strip to the top and bottom of each panel picture. Press seams away from picture. After frames are around all pictures, center each picture and trim to desired size (listed below). When trimming pictures to size, remember to find the center of each picture and trim an even amount from each side, as well as the top and bottom. This will vary slightly depending upon the accuracy of your seam allowance and individual sewing machines.

Quilt requires:

- (1) 18 $\frac{1}{2}$ " x 8 $\frac{1}{2}$ "
- (5) 8 $\frac{1}{2}$ " x 10 $\frac{1}{2}$ "
- (1) 10 $\frac{1}{2}$ " x 8 $\frac{1}{2}$ "
- (4) 12 $\frac{1}{2}$ " x 10 $\frac{1}{2}$ "
- (3) 10 $\frac{1}{2}$ " x 12 $\frac{1}{2}$ "

Accent Fabrics (12)- Cut (2) 2 $\frac{1}{2}$ " x WOF strips from each of the 12 Accent fabrics

Next, stitch varying accent fabric strips into strip sets. Mix up the order you use the assorted prints, as this will add variety to the sets. Make

- (2) sets of (6) 2 $\frac{1}{2}$ " x WOF
- (1) set of (5) 2 $\frac{1}{2}$ " x WOF
- (1) set of (4) 2 $\frac{1}{2}$ " x WOF

From your strip sets, cut 2 $\frac{1}{2}$ " segments across the width of the strip set. Cut the strip sets flat and not folded to ensure accurate sets.

Quilt Assembly

Join the segments together to create the rows and groupings shown in diagrams 1, 2 and 3. Use remaining strips cut into 2 $\frac{1}{2}$ " squares to finish any strips needing additional squares (there will be a few that need just a few more squares). Please note, per the diagrams, that you will need some additional sets of six (which can be made up from the leftover sets of fours); you will also need four sets of 9 piece segments. Again, you will have some leftover sets of four and five piece segments, along with 3 miscellaneous accent fabric strips to create these last few segments.

Create (3) vertical rows with accent segments and pictures. (Diagrams 1, 2 and 3). Once you have pieced the three main vertical rows, you will join the rows with the (24) piece accent segments for sides and between rows, as shown in Diagram 4. Attach a (26) piece segment to the top and bottom.

Inner Border (stripe) 21339 Z

Cut (6) 2" x WOF strips. Stitch strips together end to end, at a 45 degree angle. Cut (2) 2" x 53" strips. Refer to the Diagram 5 for layout of inner and outer borders – attach to the sides of the quilt, pressing away from the quilt center. Square up your ends. Cut (2) 2" x 56" strips – attach to the top and bottom of the quilt, pressing away from the quilt center. Again, square your corners.

Outer Border 21335 P

Cut (7) 6 $\frac{1}{2}$ " x WOF. Stitch strips together end to end, at a 45 degree angle. Cut (2) 6 $\frac{1}{2}$ " x 56" strips – attach to the sides of the quilt, pressing away from the quilt center. Square up your ends. Cut (2) 6 $\frac{1}{2}$ " x 68" strips – attach to the top and bottom of the quilt, pressing away from the quilt center. Again, square your corners.

Binding 21234 L

Cut (7) 2 $\frac{1}{4}$ " strips; join strips together end to end, at a 45 degree angle. Press in half, WST, to form your binding. Quilt as desired, bind, and enjoy!

While all possible care has been taken to assure the accuracy of this pattern, we are not responsible for printing errors or the way in which an individual work varies

Diagram 1

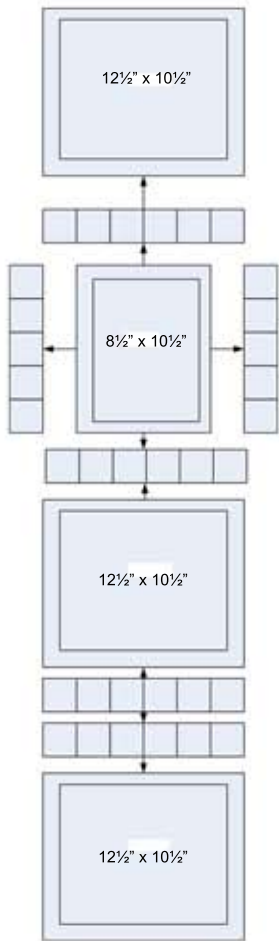


Diagram 2

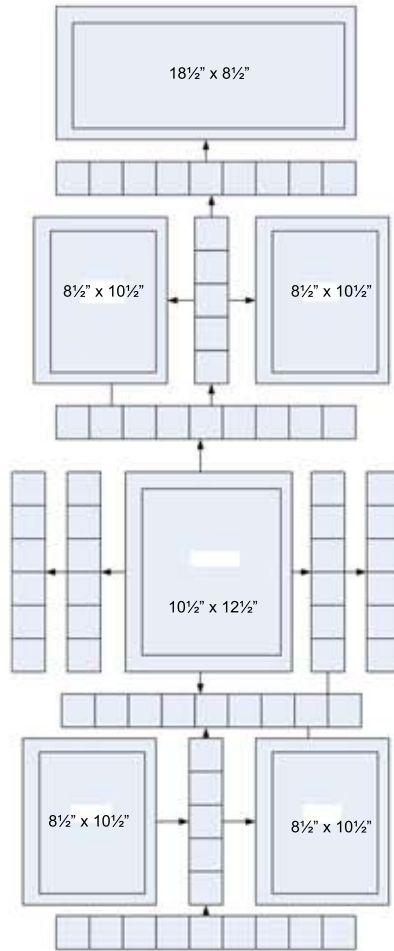


Diagram 3

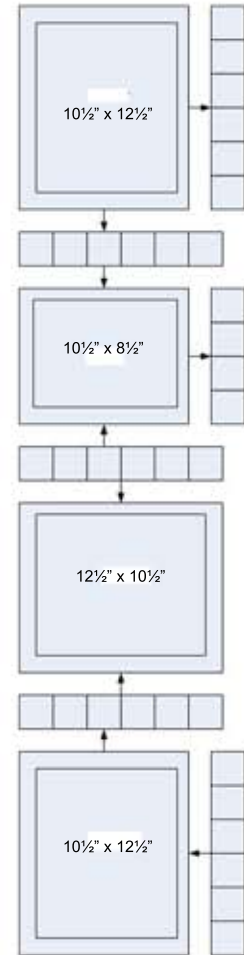
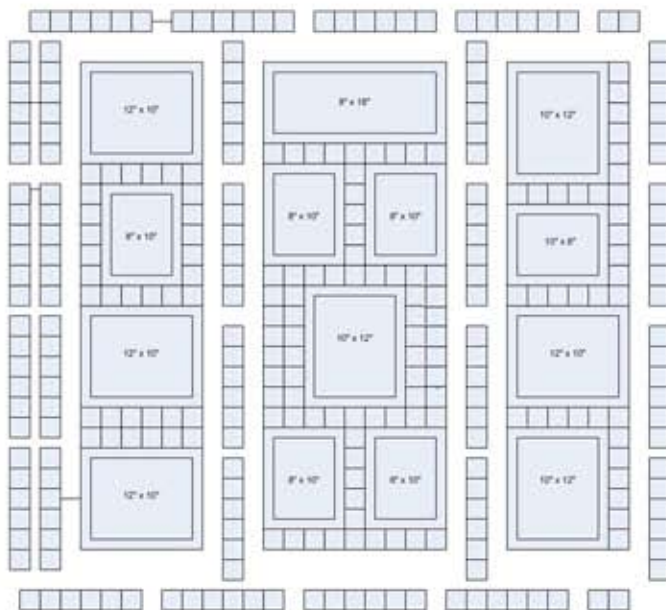


Diagram 4



Finished Quilt

