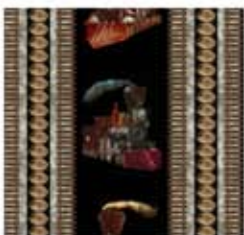


Steam Engines

©2009 The Currier & Ives Foundation™



58" x 76"



20810 J 2 yards



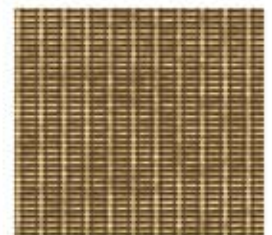
20809 G ½ yard



20809 S ¾ yard



20811 R 1 ½ yards



20849 A ⅔ yard



20812 G ½ yard



20812 T ⅓ yard



20813 E ½ yard



20808 SJ 5 yards

Steam Engines

Designed by Karla Schultz

Skill level: Beginner

Quilt Size: 58" x 76"

Finished block size: 6"

Cutting:

- 20810-J** Cut 4 – 6½" x 60½" strips by centering a 6½" x 24" ruler along the stripe and "fussy cutting" the strips
- 20809-G** Cut 8 – 6½" squares by centering a 6½" square ruler over a steam engine image and "fussy cutting" each image.
- 20809-S** Cut 11 - 6½" squares in the same manner as the 20809-G squares
- 20811-R** Cut 6 – 6½" border strips
- 20849-A** Cut 6 – 2½" border strips
- 20812-G** Cut 2 - 3 ⅞" strips, sub cut into 15 squares. Cut each square diagonally to yield 30 triangles.
Cut 4 – 2½" squares from remainder of strip
- 20812-T** Cut 2 – 3 ⅞" strips, sub cut into 15 squares. Cut each square diagonally to yield 30 triangles.
- 20813 –E** Cut 3 - 3 ⅞" strips, sub cut into 30 squares. Cut each square diagonally to yield 60 triangles.
- 20808 – SJ** Cut 2 - 42" x 82" lengths of fabric. Trim selvages.
From one length cut 2 – 12½" x 82" strips and 4 – 2½" x 82" strips for binding.

NOTE: All seam allowances are ¼" unless otherwise noted.

Piece Pinwheel Blocks: Press all seams open.

1. Sew green and cream triangles together to make 30 green/cream half square triangle (HST) units.
2. Sew gold and cream triangles together to make 30 gold/cream HST units.
3. Sew HST units together to create 15 pinwheel blocks.



Assemble Quilt:

Sew 5 pinwheel blocks and 5 fussy cut steam engine squares into rows, alternating the green and gold steam engine squares and making sure the images are facing correctly. Reference quilt image for placement. Press seams toward the steam engine print. Make 3.

Stitch pinwheel block/square rows together with 20810 J 6½" x 60½" strips to form center of quilt. Reference quilt image for placement. Press seams toward 20810 J strips.

Inner Borders

Stitch 20849-A 2½" strips together to form one long strip. Sub cut into 2 - 2½" x 60½" strips and 2 - 2½" x 42½" strips.

Sew a 2½" x 60½" strip to each side of the quilt center. Press seam toward border. Sew a 20812-G 2½" square to each end of a 2½" x 42½" strip. Sew strip to top and bottom of quilt center. Press seam toward border.

Outer borders

Stitch 20811-R 6½" strips together to form one long strip. Sub cut into 2 - 6½" x 64½" strips and 2 - 6½" x 46½". Sew a 6½" x 64½" strip to each side of the quilt. Press seams toward border. Sew a 20809-S 6½" square to each end of the 6½" x 46½" strips. Sew strip to the top and bottom of the quilt. Press seam toward the border.

Backing

Sew a 12½" x 82" strip to each side of the 42" x 82" length of backing. Press seams open.

Layer, quilt and bind.

www.QuiltingTreasures.com

While all possible care has been taken to ensure the accuracy of this pattern, we are not responsible for printing errors or the way in which individual work varies.

NOT FOR RESALE

Spring/09