

Island Friends



48" x 58"



20742-S ¼ yd



20743-G ¼ yd



20744-B ¼ yd



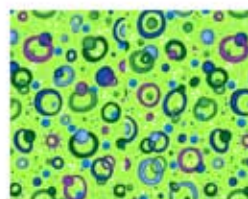
20745-B 1¼ yds



20746-B ¼ yd



20747-B ¾ yds



20748-G ⅜ yd



20749-R 1½ yd

Island Friends
Finished Quilt Size: 48" x 58"
Designed by Pat Harrison
Skill Level: Beginner

Fabric Requirements:

NOTE: All measurements based on 42" wide fabric. All seams are ¼ inch; borders are pieced.

¾ yard - 20742-S	¾ yard - 20746-B
¾ yard - 20743-G	3¾ yards - 20747-B
¾ yard - 20744-B	¾ yard - 20748-G
1¼ yards - 20745-B	1⅞ yard - 20749-R

Cut the Fabrics:

20742-S, 20744-B, 20745-B, 20746-B, and 20747-B:
cut/fussy cut 1 each fabric – 7½" x 38½" panel (total of 5 panels)

20743-G, cut across the stripe from selvedge to selvedge:
6 strips – 2½" x 38½"

20748-G:
Cut 5 strips – 1½" x width of fabric

20749-R:
Cut 5 strips – 4½" x width of fabric

20745-B:
Cut 6 – 2½" x width of fabric strips (binding)

Assemble The Quilt Center

Sew a 20743-G strip to the top of each 7½ inch fussy cut panel. Sew an additional 20743-G strip to the bottom of the 20745-B panel. Arrange as pictured and sew all panels and strips together, being careful to align stripes consistently at beginning and ending. Press seam in toward stripe strip.

Add Border #1

Piece 20748-G strips to create 2 border pieces 47" long. Sew to long vertical sides of center panel. Sew remaining two 40½" 20748-G border pieces to top and bottom horizontal sides of center panel.

Add Border #2

Piece border strips of 20749-R to create two 48½ inch strips and two – 49½ inch strips. Sew the 49½" border strips to each long vertical side, press seam toward the green border. Sew the 48 ½" border strips to the top and bottom horizontal sides of the quilt center to complete the quilt, press seam toward the green border.

Finish The Quilt

Layer the quilt top, batting, and backing. Quilt as desired. Bind.

While all possible care has been taken to assure the accuracy of this pattern, we are not responsible for printing errors or the way in which an individual work varies